



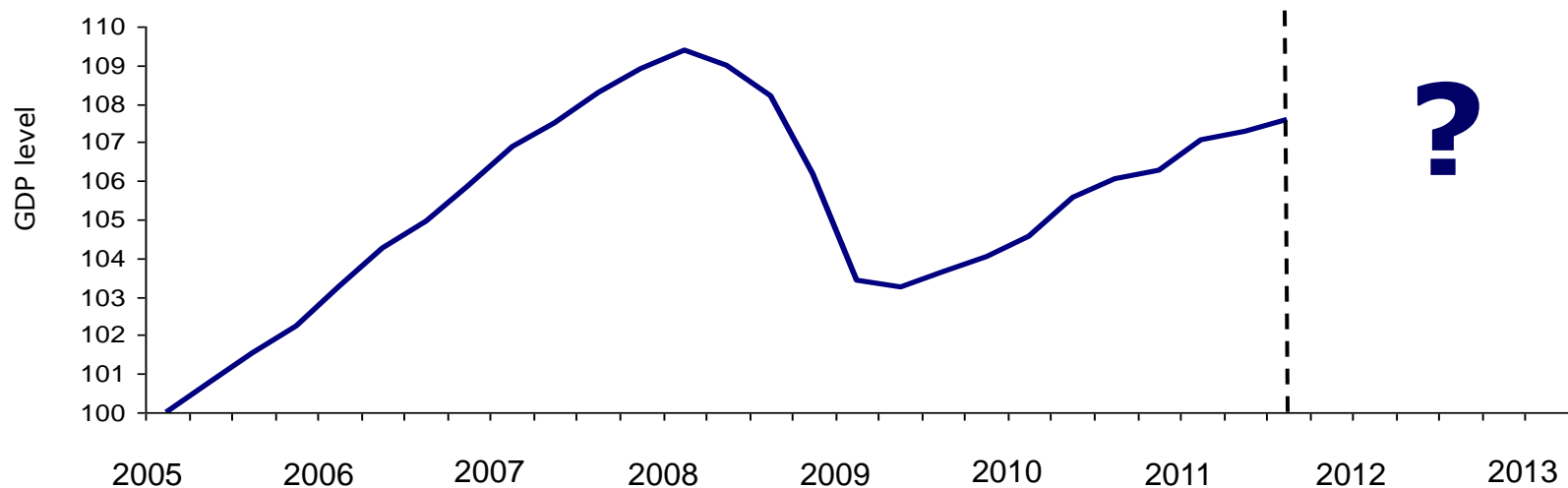
EUROPE 2020

Presentation by Vicente Hurtado-Roa
Secretariat General

SG-D1

Restoring growth: a pressing priority









EU GDP level in recent years (first quarter 2005 = 100)



Europe 2020 - 3 integrated priorities

- ✓ **Smart growth**
Developing an economy based on knowledge and innovation
- ✓ **Sustainable growth**
Promoting a more efficient, greener and more competitive economy
- ✓ **Inclusive growth**
Fostering a high-employment economy delivering social and territorial cohesion

Meeting our targets for 2020

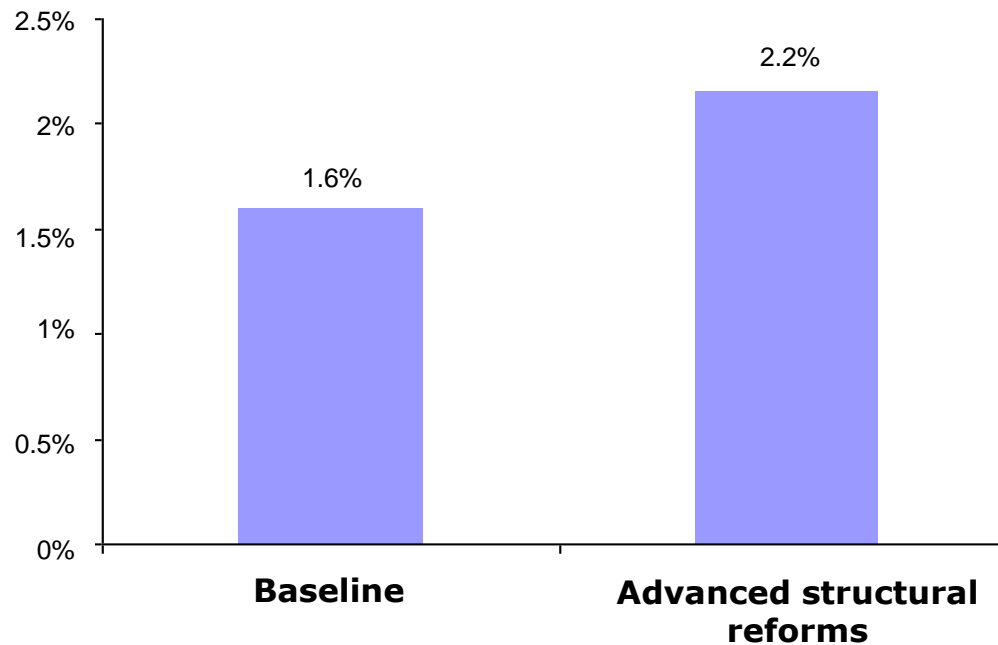
EMPLOYMENT	75% of the population aged 20-64 should be employed	
INNOVATION	3% of the EU's GDP should be invested in R&D	
CLIMATE / ENERGY	A reduction of CO2 emissions by 20%	
	Share of renewable energies up to 20%	
	An increase in energy efficiency by 20%	
EDUCATION	The share of early school leavers should be under 10%	
	At least 40% of the younger generation should have a degree or diploma	
POVERTY	20 million fewer people should be at risk of poverty	

7 flagship initiatives: actions at EU and Member State levels

Smart Growth	Sustainable Growth	Inclusive Growth
<p>Innovation « <i>Innovation Union</i> »</p>	<p>Climate, energy and mobility « <i>Resource efficient Europe</i> »</p>	<p>Employment and skills « <i>An agenda for new skills and jobs</i> »</p>
<p>Education « <i>Youth on the move</i> »</p>	<p>Competitiveness « <i>An industrial policy for the globalisation era</i> »</p>	<p>Fighting poverty « <i>European platform against poverty</i> »</p>
<p>Digital society « <i>A digital agenda for Europe</i> »</p>		

What if we meet our Europe 2020 targets?

Average annual GDP growth: scenarios for 2010-2020



Reaching the Europe 2020 targets will raise growth significantly. This requires structural reforms together with fiscal consolidation efforts so as to increase growth by half a percentage point every year.

Source: Presentation by President Barroso, Informal European Council, 30 January 2012

The European Semester: who does what and when?

	JAN	FEB	MAR	APR	MAY	JUN	JUL	
European Commission	Annual Growth Survey (AGS) presented				Assessment of NRPs and CSPs	Recommendations to Member States based on NRPs and SCPs		
Council of the European Union		AGS debated ahead of European Council					Recommendations to Member States formally adopted	Troughout THE YEAR: Peer review of Member States/compliance with recommendations including consideration of possible further reinforcement measures (Excessive Deficit Procedure/ Excessive imbalance Procedure)
European Parliament		AGS debated ahead of European Council						
European Council			Endorsement at reform priorities for EU, Member States			Debate and endorsement of recommendations to Member States		AUTUMN: Government present draft budget to national parliaments for debate in the with established national practice
Member States				National Reform Programmes (NRPs) and Stability/ Convergence Programmes (SCPs) sent to Commission				

Számszerűsített célok – 2020: Magyarország



FOGLALKOZTATÁS	75%	a 20–64 évesek körében	75%	62,1%
INNOVÁCIÓ	3%	az Európai Unió GDP-jének	1,8%	1,3%
KLÍMA / ENERGIA	20%-kal kevesebb üvegházhatást okozó gáz	+10%	-16%	
	20%	megújuló energiaforrások aránya	14,65%	9,1%
		20%-kal jobb energiahatékonyság	10%	
OKTATÁS	10%	alatt a korai iskolaelhagyók aránya	10%	11,5%
		Legalább 40%-a az uniós lakosoknak felsőfokú végzettségű	30,3%	29,9%
SZEGÉNYSÉG		Legalább 20 millió fővel csökkenjen	-450 000	+240 000



European
Commission

Member States targets	Employment rate (in %)	R&D in % of GDP	Emissions reduction targets (compared to 2005 levels)	Renewable energy	Energy efficiency – reduction of energy consumption in Mtoe	Early school leaving in %	Tertiary education in %	Reduction of population at risk of poverty or social exclusion in number of persons
AT	77-78%	3.76%	-16%	34%	7.16	9.5%	38% (including ISCED 4a, which currently is at about 12%)	235,000
BE	73.2%	3.0%	-15%	13%	9.80	9.5%	47%	380,000
BG	76%	1.5%	20%	16%	3.20	11%	36%	260,0004
CY	75-77%	0.5%	-5%	13%	0.46	10%	46%	27,000
CZ	75%	1% (public sector and overall)	9%	13%	n.a.	5.5%	32%	Maintaining the number of persons at risk of poverty or social exclusion at the level of 2008 (15.3% of total population) with efforts to reduce it by 30,000
DE	77%	3%	-14%	18%	38.30	<10%	42% (including ISCED4 which currently is at 11.4%)	330 0004 (longterm unemployed)
DK	80%	3%	-20%	30%	0.83	<10%	At least 40%	22,0004 (household with low work intensity)
EE	76%	3%	11%	25%	0.71	9.5%	40%	Reduce the at-risk- of poverty rate (after social transfers) to 15% (from 17.5% in 2010)
EL	70%	to be revised	-4%	18%	2.70	9.7%	32%	450,000
ES	74%	3%	-10%	20%	25.20	15%	44%	1,400,000-1,500,000
FI	78%	4%	-16%	38%	4.21	8%	42% (narrow national definition)	150,000
FR	75%	3%	-14%	23%	34.00	9.5%	50%	Reduction of the anchored at-riskof- poverty rate by one third for the period 2007-2012 or by 1,600 000 people
HU	75%	1.8%	10%	14.65%	2.96	10%	30.3%	450,000



European
Commission

Member States targets	Employment rate (in %)	R&D in % of GDP	Emissions reduction targets (compared to 2005 levels)	Renewable energy	Energy efficiency – reduction of energy consumption in Mtoe9	Early school leaving in %	Tertiary education in %	Reduction of population at risk of poverty or social exclusion in number of persons
IE	69-71%	approx. 2% (2.5% GNP)	-20%	16%	2.75	8%	60%	186,000 by 2016
IT	67-69%	1.53%	-13%	17%	27.90	15-16%	26-27%	2,200,000
LT	72.8%	1.9%	15%	23%	1.14	<9%	40%	170,000
LU	73%	2.3-2.6%	-20%	11%	0.20	<10%	30%	No target
LV	73%	1.5%	17%	40%	0.67	13.4%	34-36%	121,000
MT	62.9%	0.67%	5%	10%	0.24	29%	33%	6,560
NL	80 %	2,5 %	-16%	14%	n.a.	<8 %	>40% 45% expected in 2020	100,000
PL	71%	1.7%	14%	15.48%	14.00	4.5%	45%	1,500,000
PT	75%	2.7-3.3%	-10%	31%	6.00	10%	40%	200,000
RO	70%	2%	1%	38%	10.00	11.3%	26.7%	580,000
SE	Well over 80%	4%	-17%	49%	12.80	<10%	40-45%	Reduction of the % of women and men who are not in the labour force (except full-time students), the long-term unemployed or those on longterm sick leave to well under 14% by 20204
SI	75%	3%	4%	25%	n.a.	5%	40%	40,000
SK	72%	1%	13%	14%	1.65	6%	40%	170,000
UK	No target in NRP	No target in NRP	-16%	15%	n.a.	No target in NRP	No target in NRP	Existing numerical targets of the 2010 Child Poverty Act
Estimated EU	73.70-74%	2.65-2.72%	-20% (compared to 1990 levels)	20%	206.9	10.30-10.50%	37.50-38.0%	
EU headline target	75%	3%	-20% (compared to 1990 levels)	20%	20% increase in energy efficiency equalling 368 Mtoe	10%	40%	20,000,000

Next steps

Communication from the Commission (March 2014)

Public consultation (until summer 2014)

Conclusions by new College (early 2015)

More information

Website

www.ec.europa.eu/europe2020